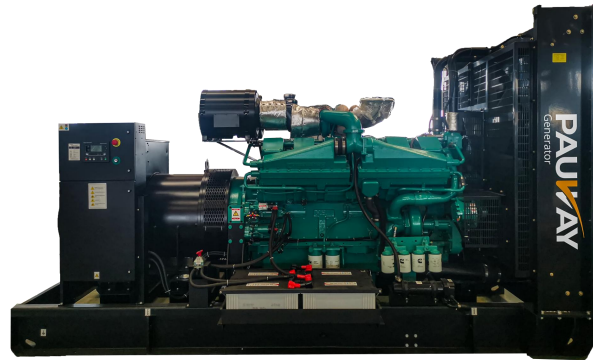


GENERATOR SET TECHNICAL SHEET

PAUWAY

Model: PWC1650A

400V | 50Hz | 1500RPM



| | | | |
|---------------------------|---------------------|-----------------------------|----------------------------|
| ENGINE | CUMMINS KTA50-G8 | ALTERNATOR | LEROY-SOMER LSA 50.2 L8 |
| PRP PRIME POWER | 1100kW 1375kVA | ESP STANDBY POWER | 1320kW 1650kVA |

Specifications are subject to change without notice.

GENERAL FEATURES

GB/T 2820 (ISO 8528)

- I 40°C radiator, fans are driven by belt, with safety guard
- I Alternator: single bearing, IP23, insulation class H
- I Standard control panel
- I Lead-acid batteries, rack and cables
- I Vibration damper
- I Dry type air filter, fuel filter & oil filter
- I 24V charging alternator
- I Exhaust bellows, elbows, flange & muffler
- I User manual

Standard Configuration (open type)

Overall Dimensions: 5250×2150×2400mm

Weight: 10500kg

Soundproof Type

Overall Dimensions: N/A

Weight: N/A

Standard 20'ft GP container

Overall Dimensions: 6058×2438×2896mm

Weight: 15500kg

OPTIONS

- ◇ Different Voltage
- ◇ Charging
- ◇ Cylinder Liner Water Heater
- ◇ Condensate drain heater
- ◇ Soundproof type
- ◇ Rainproof type
- ◇ Trailer type
- ◇ Automatic transfer switch
- ◇ Paralleling system
- ◇ Switchgear
- ◇ Spare parts
- ◇ Auto oil replenishment system
- ◇ Daily fuel tank
- ◇ Base fuel tank

WAY TO

P - Pioneering Power Solutions

A - Advanced and Assured

U - Unparalleled Versatility

www.pauway.cn / sales@pauway.cn / +86-22-86859198

GENERATOR SET TECHNICAL SHEET



Model: PWC1650

400V | 50Hz | 1500RPM

SALES PROMISES

- All products are brand-new, with each unit subject to strict factory inspection.
- Warranty: 1 year from commissioning completion, 1,000 cumulative operating hours, or 15 months from shipment to Pauway Tianjin Manufacturing Base (for unused units) — whichever occurs first.
- Extended warranty: Available upon inquiry; provided by Bowei or its authorized agents.

GENERATOR RATINGS

| Voltage V | Hz | Phase | PF ($\cos\phi$) | Standby Amps | Prime Ratings | Standby Ratings |
|-----------|----|-------|----------------------|-----------------|---------------|-----------------|
| 440/254 | 50 | 3 | 0.8 | 2165 | 1100kW | 1320kW |
| 415/240 | 50 | 3 | 0.8 | 2296 | 1100kW | 1320kW |
| 400/230 | 50 | 3 | 0.8 | 2382 | 1100kW | 1320kW |
| 380/220 | 50 | 3 | 0.8 | 2507 | 1100kW | 1320kW |

I High voltage (optional): 6.3kV / 10.5kV (Special voltages customizable)

GENERATING SET DATA

| | |
|--|-------|
| Voltage setting range | ±5% |
| Steady-state voltage deviation | ±1% |
| Transient voltage deviation / 100% sudden reduction | ≤25% |
| Transient voltage deviation / sudden increase | ≤-20% |
| Voltage stabilization time / 100% sudden reduction (s) | ≤6 |
| Voltage stabilization time / sudden increase (s) | ≤6 |
| Frequency drop | ≤5% |
| Steady-state frequency drop | ≤1.5% |
| Transient frequency deviation / 100% sudden reduction | ≤12% |
| Transient frequency deviation / sudden increase | ≤-10% |
| Frequency recovery time / 100% sudden reduction (s) | ≤5 |
| Frequency stabilization time / sudden increase (s) | ≤5 |

WAY TO

P - Pioneering Power Solutions

A - Advanced and Assured

U - Unparalleled Versatility

www.pauway.cn / sales@pauway.cn / +86-22-86859198

GENERATOR SET TECHNICAL SHEET

PAUWAY

Model: PWC1650

400V | 50Hz | 1500RPM

ENGINE SPECIFICATION

KTA50-G8

| | |
|----------------------|------------------|
| Manufacturer / Model | CUMMINS KTA50-G8 |
| Prime Power | 1200kW |
| Standby Power | 1429kW |
| Rated speed (r/min) | 1500 |
| No.Cylinder | 16 |
| Cylinder arrangement | V |
| Stroke | 4 |
| Air intake system | Turbo |
| Governor type | Electronic |
| Bore and stroke | 159×159mm |
| Displacement | 50.3L |
| Compression ratio | 14.9:1 |

Fuel System

| | | |
|--|----------|--------|
| Fuel consumption @ 100% (Prime Power) Load | 200g/kWh | 289L/h |
| Fuel consumption @ 75% (Prime Power) Load | 205g/kWh | 222L/h |
| Fuel consumption @ 50% (Prime Power) Load | 214g/kWh | 155L/h |

Exhaust System

| | |
|--------------------------|------|
| Exhaust gas flow (L/S) | 3845 |
| Exhaust temperature (°C) | 485 |
| Max back pressure (kPa) | 6.7 |

Air Intake System

| | |
|--------------------------------|------------------------------------|
| Combustion air flow (L/S) | 1500 |
| Air flow required for radiator | |
| Air Intake System | Air filter & exhaust turbocharging |

Oil System

| | |
|-------------------------|----------------------------------|
| Oil System | Oil filter、Oil pump、Oil dipstick |
| Total oil capacity (L) | 204 |
| Oil consumption (g/kWh) | |

Cooling System

| | |
|----------------------------|--|
| Cooling Type | Water-cooled |
| Intercooling method | Water-air intercooled |
| Cooling System | Thermostat、Water pump、Radiator、Intercooler |
| Coolant capacity(L) | 165(Engine Only) |
| Max water temperature (°C) | 98 |

WAY TO

P - Pioneering Power Solutions

A - Advanced and Assured

U - Unparalleled Versatility

www.pauway.cn / sales@pauway.cn / +86-22-86859198

GENERATOR SET TECHNICAL SHEET



Model: PWC1650

400V | 50Hz | 1500RPM

ALTERNATOR SPECIFICATION

| | |
|-----------------------------------|--------------------|
| Power (kVA) | 1500 |
| Power (kW) | 1200 |
| Alternator Efficiency(%) | 96.8 |
| Number of Bearing | 1 |
| Power Factor | 0.8 |
| Protection Class | IP23 |
| Altitude | ≤1000m |
| Exciter Type | Brushless exciting |
| Insulation Class/Temperature Rise | H/H |
| THF | <2% |

Industrial alternators meet the requirements of the relevant parts of the BS5000, VDE 0530, NEMA MG1-22, IEC34, CSA 22.2-100 and AS1359.

-Note: Generator parameters may vary depending on brand, voltage level and other factors

Control Functions

Main functions

| | |
|---|--|
| 4-line text display | 6 customizable output channels |
| Multi-language display | 4 customizable analog/digital input channels |
| 5 menu navigation keys | Supports 0-10V or 4-20mA sensors |
| LCD alarm indication | Speed detection via CAN, MPU and generator frequency |
| Customizable startup screen, text and screen saver | Built-in real-time clock (RTC) |
| Compatible with all expansion modules | Manual/automatic fuel pump control |
| Data logging | Engine pre-heating and post-heating |
| Built-in powerful PLC function | Built-in powerful PLC function |
| Emergency mode (all protections disabled) | Preset multiple start-stop cycles |
| Front panel editable parameters (with password protection) | Engine start/stop idle speed |
| Power-saving mode | Fuel level alarm |
| 3-phase generator detection and protection | 3 customizable maintenance reminders |
| 3-phase mains detection and protection (PEC6.12 only) | Supports EFI engines, including Tier 4 engines |
| ATS switch control (PEC6.12 only) | Parameter setting via free DSE software |
| Unit current and power monitoring (kW, kvar, kVA, pf) | IP65 protection rating for better water resistance |
| Mains current and power monitoring (kW, kvar, kVA, pf) | Can read parameters of other devices via CAN communication |
| Overload protection | Supports J1939-75 CAN communication |
| Overcurrent protection | Shield EFI engine CAN alarms |
| Front panel manual control of circuit breaker closing/opening | 1 set of backup protection parameters |
| Customizable fuel and start output ports for EFI engines | |

WAY TO

P - Pioneering Power Solutions

A - Advanced and Assured

U - Unparalleled Versatility

www.pauway.cn / sales@pauway.cn / +86-22-86859198

GENERATOR SET TECHNICAL SHEET



Model: PWC1650

400V | 50Hz | 1500RPM

PAUWAY HIGHLIGHT

/// Efficiency

- Low consumption
- High reliability
- High quality power supply
- Long maintenance cycle

/// Support

- Provide global product warranty and technical

/// Standard

- The generator set is designed and manufactured in
- The engine used conforms to ISO 2008:9001 and
- The generator used conforms to NEMA MG1, EN and IEC standards

/// Rated power

- System Rating: power will vary with the change of alternator
- According to ISO 8528-5, the generator set conforms to G3
- According to ISO 8528-5, the generator set is allowed to use standby power

/// Performance assurance certification (PAC)

- Meeting ISO 8528-5 test transient response of genset
- Strong load carrying capacity at one time
- Product design, quality and performance
- All systems have been factory tested.

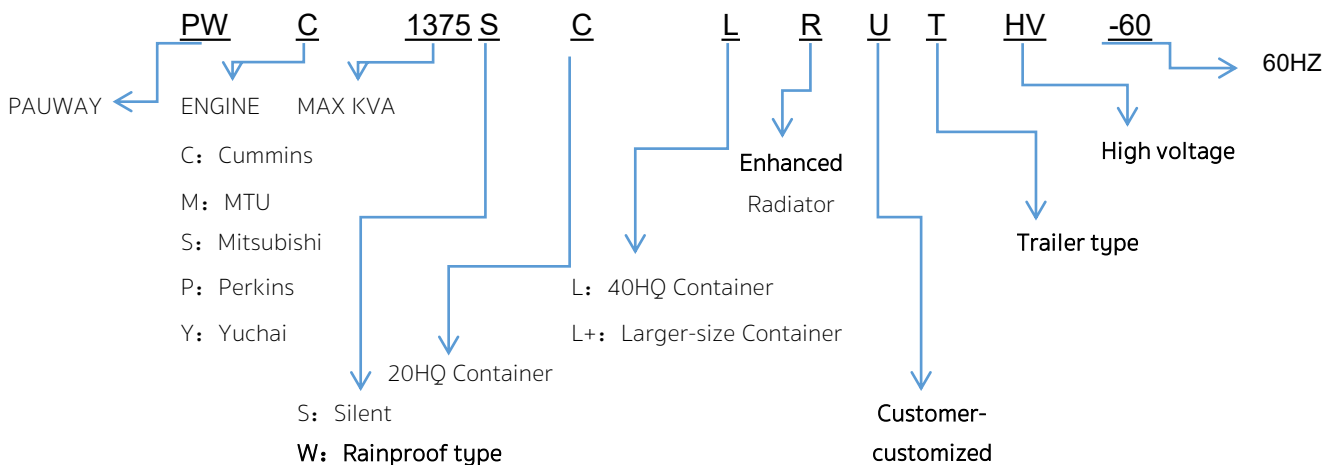
/// Provide full set of spare parts

- Control panel
- Circuit breaker/Power distribution
- Fuel system
- Exhausting system
- Fuel connection with shut-off valve mounted on base
- Starting / charging system
- Mechanical / electrical driven radiator system
- Suitable model of AC alternator

/// Certification

- CE certificate

NAMING PRINCIPLE



TIANJIN PAUWAY POWER EQUIPMENT CO.,LTD
WEBSITE: WWW.PAUWAY.CN
EMAIL: SALES@PAUWAY.CN
TEL: + 86-22-86859198